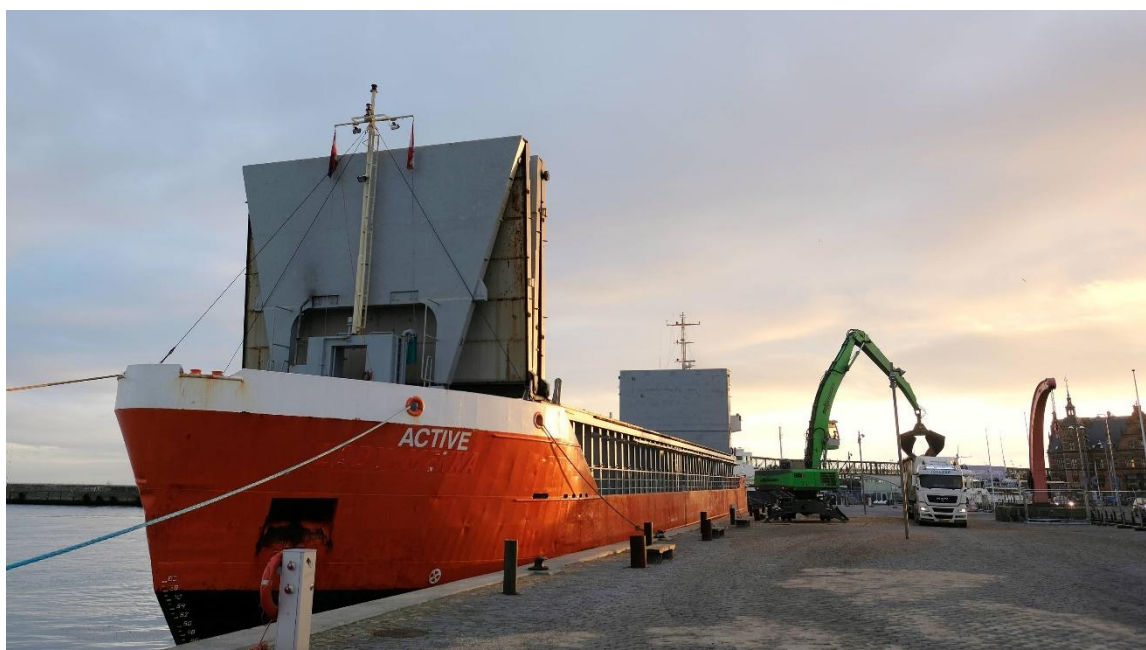


Port of Helsingor 2026

Port dues

(Prices are in dkk. ex vat)



VAT Number: 33 56 68 40

P- Number: 1016821906

Bank details:

Bank: Spar Nord

Bank Account no.: 9035 457 435 6305

SWIFT: SPNODK22

IBAN: DK8090354574356305

EAN Number: 579 800 821 0297

Address:

Nordhavnsvej 13

3000 Helsingor

Denmark

1. Port dues

Conditions

A port due is charged on all vessels, vessels and all floating materials for berthing in the harbor or in the dredged fairways to the harbor. The payment of the port due is the responsibility of the ship agent/broker

The port due must be paid to the port prior departure. However, the port may, against a deposit or another security provided by the Vessel or its agent, grant permission for departure before the port due has been paid

A vessel is considered berthing in the harbor from the day of arrival

For all commercial vessels, the port due is calculated based on the vessels gross tons (GT). Special Port dues have been set for Fishing boats, schooners and sailing boats

The port due is calculated in whole gross tons (GT) or whole meters. Fractions of GT and meters are disregarded

The port due for commercial Vessels in GT covers the Vessels stay for up to one Week

Shipping Companies docked in Helsingør Harbor or operating regular routes from Helsingør Harbor can enter fixed payment agreements and obtain a discount

Port dues paid at the Shipping company's discretion with either:

- A. 4,34 dkk. per Gross ton (GT) for each call or
- B. 24,84 dkk. per Gross ton (GT) as a monthly fee

The Monthly fee (B) is paid Monthly in advance and grants the right to an unlimited number of calls within the relevant calendar Month

The Monthly fee cannot be refunded in any cases

Port dues for recreational fishing Vessels and schooners that have not entered into a fixed payment agreement with Helsingør Harbor:

Commercial Vessels with a contract:

Calculated based on the vessels area. The price per m² is: dkk 339,00

Commercial Vessels without a contract:

Calculated based on the vessels area. The price per m² is: dkk 420,00

Prepaid Port dues are non-refundable in any cases

Guests by Sailing Boat:**Prices per Day (inclusive VAT)**

Length of Boat	Per Day
15 - 20 meter	493
20 - 25 meter	612
25 - 30 meter	675
30 - 35 meter	919
35 - 40 meter	1.017
40 - 45 meter	1.386
45 - 50 meter	1.723
Over 50 meter	2.280

Port dues in connection with disembarkation of passengers from vessel at the Berth

A fixed fee is charged for using the Port to disembark passengers from Cruise Vessels. Payment is made per call to the Berth

Fee:

Anchored: dkk. 3,43 per GT inclusive ISPS-Fee

Exemption from Port dues:

- A. Vessels belonging to Danish or Foreign Government Authorities and which are not designed to carry Cargo or Passengers
- B. Vessels registered for fishing, except in cases where the Vessel calls the port and unloads fish that have been loaded in another Port
- C. Vessels calling the Port solely to seek medical assistance, disembark a sick person and Vessel wrecked or dead Bodies, as well as Vessels that are forced to seek land due to damages, storm, fog or other weather conditions provided that the call does not extend beyond 24 Hours
- D. Vessel members of the Danish Wooden Vessel Association and have a certificate of preservation, if their stay does not exceed 48 hours. This does not apply if passengers are being picked up or disembarked
- E. Vessel participation in regatta to promote Helsingor

2. Taxes on Goods

When calculating taxes on goods, the rule in this section applies:

Duties on Goods are payable on all goods, except goods used for the Vessel only, which are unloaded or loaded or otherwise set ashore in the port or in the dredged channels leading to it. The Vessel or its agent must pay the duties on the goods to the port before disembarking. However, the port may against a deposit or other security, grant permission to set sail before the duties have been paid. Duties on goods are payable by the consignee or consignor respectively and the Vessel has recourse against the consignee or consignor, respectively

- A. Duties on goods are charged per whole unit calculated according to the customs tariff

Ferry, trailer and Container Cargo	26,34 dkk per ton
Oil and Gasoline usage, tariff chapter 27.10	28,86 dkk per ton
Cement, tariff chapter 25.23	12,42 dkk per ton
Coal, tariff chapter 27.01-27.04	15,87 dkk per ton
Stone and gravel, tariff chapter 25 (except 25.01 and 25.23)	7,74 dkk per ton
Grains tariff chapter 10, Oilseeds tariff chapter 12, animal feed tariff chapter 23, salt tariff chapter 25.01, fertilizers tariff chapter 31, wood and wood chips tariff chapter 44.01-44.07 and 44.09, metal waste tariff chapter 72.04	14,14 dkk per ton
Fresh Fish and Shellfish unloaded from fishing vessels or fishing boxes in a processed or unprocessed state, by sales value	3,61%
Other Goods	27,62 dkk per ton
Special cargo, building elements including steel and concrete elements	190,60 dkk per ton

Exemption from taxes on Goods:

The following goods are exempt:

1. Conditions and other necessities for the Vessels own use
2. Ice, salt and chemicals for preserving cargo or expected catch
3. Seemarks not shipped as a commercial item
4. Mail and luggage
5. Goods and equipment for the ports own use
6. Goods that are temporarily unloaded but reloaded during the same stay

3. Passenger tax

When calculation passenger tax, the rules in the section apply:

Passenger tax are paid by all passengers embarking and disembarking from the Port. The passenger tax must be paid to the port before the Vessel departs. However, the port may against a deposit or ether security provided by the Vessel or is agent gran permission to depart before the passenger tax have been paid. The Vessel is responsible for paying the Passenger tax

1. Passenger tax is dkk 8,24 per passenger

- A. Exemption from Passenger tax:

1. Passengers remaining on board or passengers departing on the same Vessel the arrived on
2. Passengers participation in charter or fishing trips to and from the port

4. Land rent

Land rent is paid for the use of the ports area. The rent will be charged to the tenants of the area

Fixed annual rent of areas at the port is: dkk. 228,40 per m2

For temporary rental of area for events, storage of goods etc. the rent is: dkk. 10,74 per m2 per commenced Week

5. Electricity charges

A fixed electricity fee is paid for connection or a fixed monthly fee, as well as for electricity consumption per KWH from the Ports electrical installations. The vessel will be charge the fee

Electricity per KWH	Purchased price added 10%
Unloading fee per Month	dkk. 50,00

6. Water charges

A fee is paid for connection water hydrants as well as for water consumption of more than 3 m3 from the ports water installations.

Water per m3	dkk. 26,45
--------------	------------

Connection per hour	dkk. 540,00
---------------------	-------------

Exemption from Water charges

Vessels that exclusively take water from the Ports water lockers and take care of the installation and removal of water hoses themselves and consume less than 3 m3 per time are exempt from water charges

The Water is intended exclusively for the Vessels fresh water tanks. If the water and the system are misused, the Port will collect water charges from the Vessel based on the above rates

7. Manpower and cleaning rates:

For cleaning after loading/unloading or after renting out areas, the Port charges cleaning fee based on the number of manpower hours and machine hours used. The fee is payable by the Cargo receiver, Vessel or tenant

Manpower and Machine hour:

Manpower hour	dkk	540,00
Machine hour	dkk	540,00
Environmental tax	dkk	50,00

8. Receiving of waste from Vessels

The Port has a "non special fee" scheme for receiving of waste from Vessels

Vessels that are exempt from Port dues must however, pay the additional costs the Port have in connection with receiving waste from the Vessel

9. Reminder

For Port dues not paid on time, the Port charge a reminder fee. Payment is required for each time a reminder is send

Reminder fee: dkk 100,00

10. Prices

All prices are indicative and exclusive of VAT

Alle prices and valid from January 1st, 2026, until a new schedule is issued